

TOHOKU UNIVERSITY CENTENNIAL HALL KAWAUCHI HAGI HALL

Address | 40 Kawauchi, Aoba-ku, Sendai
 TEL : 81-22-795-3391 FAX : 81-22-795-3390

Access | 10 minutes by taxi from JR Sendai Station.
 A 5 minute walk from International Center Subway Station west exit no. 1 (via Ogisaka Stairway) or a 7 minute walk from Kawauchi Subway Station south exit no.2

E-mail | hagihall@grp.tohoku.ac.jp

Available hours | 9:30~21:30

Reception desk hours | 9:30~17:00

Closed | Tuesdays, end of year and new year holidays, maintenance days etc.



Located in the center of the city, it has good transportation access and can be used for a wide range of purpose such as conventions, plays and music concerts. It received the 15th Implementation of Public Buildings Awards. (Excellent award) It can be used for school events such as choir competitions in addition to concerts and academic conferences.



Hall

*Usage fees, capacity, number of seats, meal offerings, etc. are subject to change. Please check the facility website for details.

Convention Facilities

Name [Floor]	Area (m ²)	Capacity					Ceiling height (m)	Divisible	Internet	Dining/drinking	Approx. fee (9:30~17:00/ incl. tax)	Remarks
		Theater	School	Hollow Square Style	Dinner	Buffet						
Hall	886	1,235	-	-	-	-	13	×	Wired LAN/ Free(Only for Tohoku Univ. members) WiFi/Fees charged (Set up required)	×	137,500yen/7.5hrs (Weekdays)	500 inch screen/ The 866m ² area represents the area of only the 2nd fl.
Conference Room 1 [2F]	65	40	24	-	-	-	3.7	×	Wired LAN/ Free(Only for Tohoku Univ. members) WiFi/Fees charged (Set up required)	○	7,940yen/7.5hrs (Every day)	Conference Room 2 and 3 can be used together.
Conference Room 2 [2F]	65	40	24	-	-	-	3.7	×	Wired LAN/ Free(Only for Tohoku Univ. members) WiFi/Fees charged (Set up required)	○	7,940yen/7.5hrs (Every day)	Conference Room 1 and 3 can be used together.
Conference Room 3 [2F]	65	40	24	-	-	-	3.7	×	Wired LAN/ Free(Only for Tohoku Univ. members) WiFi/Fees charged (Set up required)	○	7,940yen/7.5hrs (Every day)	Conference Room 1 and 2 can be used together.
Executive Lounge [2F]	35	-	-	8	-	-	3	×	Wired LAN/ Free(Only for Tohoku Univ. members) WiFi/Fees charged (Set up required)	○	3,970yen/7.5hrs (Every day)	Fixed seats

Other Services • Dining Facilities

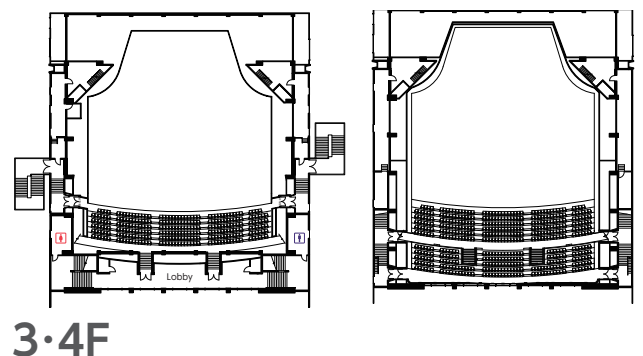
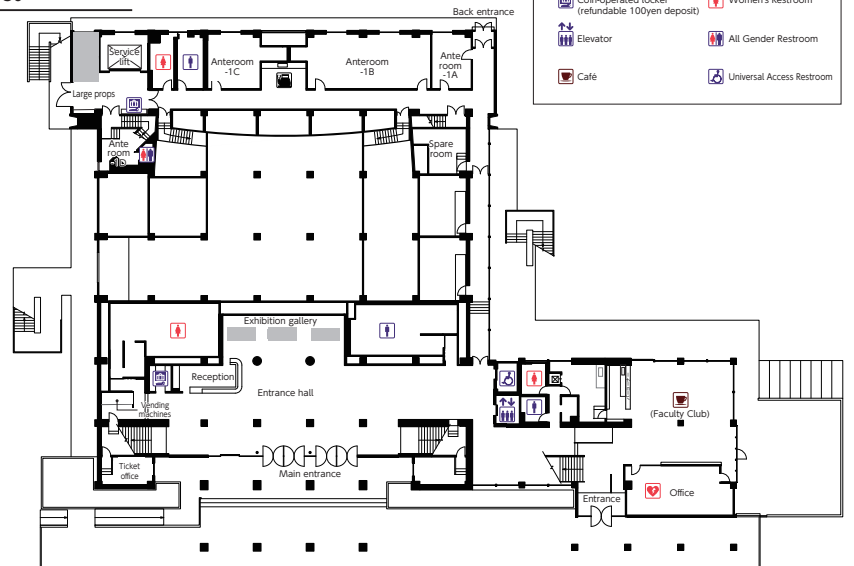
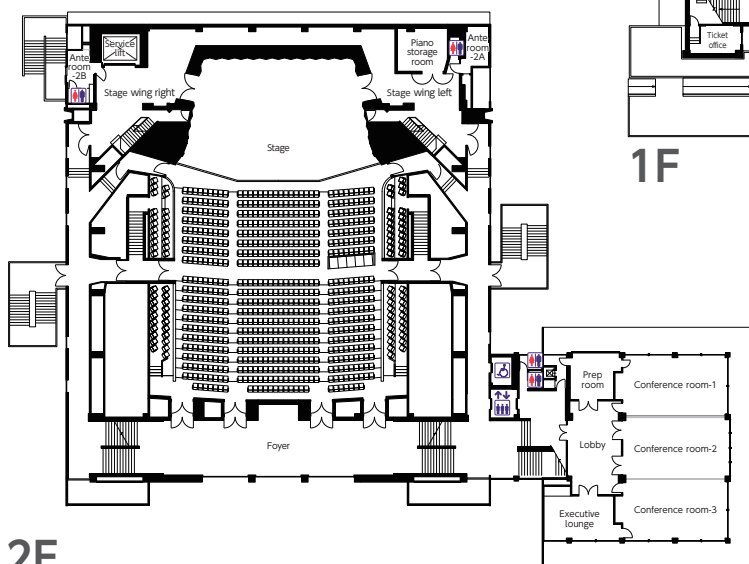
Parking	Language	Business center	Barrier-free	How to apply	Application Period	Advance Reservations
80 vehicles	English	Photocopier	Wheelchair ramp at entrance/ Wheelchair compatible toilet/ Elevator for the disabled/ some braille signs	in person/E-mail ※	From the first day of the month 12 months before the date of use to 2 months before.	×

※ Please download the application form from the website and submit in person or via the post. Tentative reservations are not accepted.

Name	Kind	Seating Capacity
Café Mozart Klee's coffee	Light refreshments (incl. café)	50



Conference Room



- AED
- Men's Restroom
- Coin-operated locker (refundable 100yen deposit)
- Women's Restroom
- Elevator
- All Gender Restroom
- Café
- Universal Access Restroom

2F

3-4F