

SENDAI INTERNATIONAL CENTER

Address | Aobayama Aoba-ku Sendai

TEL : 81-22-265-2211 FAX : 81-22-265-2485

Access | 7 minutes by taxi from JR Sendai Station (approx. 2 km).
 1 minute walk from International Center Subway Station.

E-mail | info@aobayama.jp

Available hours | 9:00~21:30

Reception desk hours | 9:00~20:00

Closed | Irregular



Sendai International Center is a base for conventions and academic culture promotion of the City of Trees Sendai. It includes a conference bldg. with a main hall with capacity of 1,000 people, large and small conference rooms, and an exhibition bldg. with 3,000 m² exhibition space. It is possible to host events for approx. 6,000 people when using both buildings together. With its natural environment such as Mt. Aobayama and Hirose River, and academic culture facilities such as Sendai City Museum, Miyagi Prefectural Art Museum and Tohoku University in the area, a new type of convention can be experienced.



Conference Bldg.

*Usage fees, capacity, number of seats, meal offerings, etc. are subject to change. Please check the facility website for details.

Convention Facilities

	Name [Floor]	Area (m ²)	Capacity					Ceiling height (:m)	Divisible	Internet	Dining/drinking	Approx. fee (9:00~17:00 /incl. tax)	Remarks
			Theater	School	Hollow Square Style	Dinner	Buffet						
Conference Bldg.	Main Hall [2F]	1,150	1,000	-	-	-	-	-	×	Shared Wired · Wifi/Free Private Wired/Fees charged	×	141,700 yen/8hrs (Weekdays)	350 inch screen
	Tachibana Conference Hall [2F]	463	500	288	90	-	-	4.8	×	Shared Wired · Wifi/Free Private Wired/Fees charged	○	137,900 yen/8hrs (Weekdays)	220 inch screen
	Hagi Conference Hall [2F]	379	400	225	72	-	-	4.8	×	Shared Wired · Wifi/Free Private Wired/Fees charged	○	129,400 yen/8hrs (Weekdays)	220 inch screen
	Shirakashi Conference Room (Whole) [3F]	366	400	234	72	-	-	4.0	Can be divided	Shared Wired · Wifi/Free Private Wired/Fees charged	○	115,000 yen/8hrs (Weekdays)	-
	Shirakashi Conference Room 1 [3F]	240	220	126	60	-	-	4.0	×	Shared Wired · Wifi/Free Private Wired/Fees charged	○	72,300 yen/8hrs (Weekdays)	-
	Shirakashi Conference Room 2 [3F]	110	110	72	48	-	-	4.0	×	Shared Wired · Wifi/Free Private Wired/Fees charged	○	42,700 yen/8hrs (Weekdays)	-
	Meeting Room 1 [1F]	91	96	54	42	-	-	2.9	×	Shared Wired · Wifi/Free Private Wired/Fees charged	○	37,600 yen/8hrs (Weekdays)	-
	Meeting Room 2 [1F]	93	96	54	42	-	-	2.9	×	Shared Wired · Wifi/Free Private Wired/Fees charged	○	37,600 yen/8hrs (Weekdays)	-
	Meeting Room 3 [1F]	53	42	24	30	-	-	2.5	×	Shared Wired · Wifi/Free Private Wired/Fees charged	○	21,900 yen/8hrs (Weekdays)	-
	Meeting Room 4 [2F]	65	56	36	36	-	-	2.6	×	Shared Wired · Wifi/Free Private Wired/Fees charged	○	26,300 yen/8hrs (Weekdays)	-
	Meeting Room 5 [2F]	65	56	36	36	-	-	2.6	×	Shared Wired · Wifi/Free Private Wired/Fees charged	○	26,300 yen/8hrs (Weekdays)	-
	Meeting Room 6 [3F]	62	56	36	36	-	-	2.6	×	Shared Wired · Wifi/Free Private Wired/Fees charged	○	26,300 yen/8hrs (Weekdays)	-
	Meeting Room 7 [3F]	62	56	36	36	-	-	2.6	×	Shared Wired · Wifi/Free Private Wired/Fees charged	○	26,300 yen/8hrs (Weekdays)	-
	Meeting Room 8 [3F]	86	100	63	42	-	-	2.6	×	Shared Wired · Wifi/Free Private Wired/Fees charged	○	36,100 yen/8hrs (Weekdays)	-
	Sakura Hall [2F]	755	800	384	132	-	-	6.8	Can be divided	Shared Wired · Wifi/Free Private Wired/Fees charged	○	140,000 yen/8hrs (Weekdays)	200 inch screen
	Sakura Hall 1 [2F]	459	312	210	96	-	-	6.8	×	Shared Wired · Wifi/Free Private Wired/Fees charged	○	84,000 yen/8hrs (Weekdays)	200 inch screen
	Sakura Hall 2 [2F]	296	256	150	78	-	-	6.8	×	Shared Wired · Wifi/Free Private Wired/Fees charged	○	56,000 yen/8hrs (Weekdays)	-
	Japanese Style Room [1F]	-	-	-	-	-	-	2.4	×	Wifi/Free	○	26,600 yen/8hrs (Weekdays)	10mats × 2 rooms
Waiting Room (10 rooms) [1~2F]	18~22	-	-	-	-	-	2.6	×	Shared Wired · Wifi/Free	○	2,800 yen/8hrs (Weekdays) *per room	-	
Reception Room [2F]	45	-	-	-	-	-	2.6	×	Shared Wired · Wifi/Free	○	5,600 yen/8hrs (Weekdays)	-	
Special Reception Room [3F]	60	-	-	-	-	-	2.6	×	Shared Wired · Wifi/Free	○	8,400 yen/8hrs (Weekdays)	-	
Exhibition Bldg.	Exhibition Hall (Whole) [1F]	3000	2560	1536	-	-	-	9.0	Can be divided into 5	Shared Wired · Wifi/Free Private Wired/Fees charged	○	554,400 yen/8hrs (Weekdays)	-
	Exhibition Hall 1 [1F]	1000	792	480	-	-	-	9.0	Can be divided	Shared Wired · Wifi/Free Private Wired/Fees charged	○	184,800 yen/8hrs (Weekdays)	-
	Exhibition Hall 1-A [1F]	500	224	150	-	-	-	9.0	×	Shared Wired · Wifi/Free Private Wired/Fees charged	○	-	-
	Exhibition Hall 1-B [1F]	500	230	150	-	-	-	9.0	×	Shared Wired · Wifi/Free Private Wired/Fees charged	○	-	-
	Exhibition Hall 2 [1F]	1000	792	480	-	-	-	9.0	×	Shared Wired · Wifi/Free Private Wired/Fees charged	○	184,800 yen/8hrs (Weekdays)	-
	Exhibition Hall 3 [1F]	1000	792	480	-	-	-	9.0	Can be divided	Shared Wired · Wifi/Free Private Wired/Fees charged	○	184,800 yen/8hrs (Weekdays)	-
	Exhibition Hall 3-A [1F]	420	180	102	-	-	-	9.0	×	Shared Wired · Wifi/Free Private Wired/Fees charged	○	-	-
	Exhibition Hall 3-B [1F]	580	348	210	-	-	-	9.0	×	Shared Wired · Wifi/Free Private Wired/Fees charged	○	-	-
	Meeting Room 1 [1F]	200	168	108	66	-	-	4.0	×	Shared Wired · Wifi/Free Private Wired/Fees charged	○	64,300 yen/8hrs (Weekdays)	Can be used with Meeting Room 2
	Meeting Room 2 [1F]	200	168	108	66	-	-	4.0	×	Shared Wired · Wifi/Free Private Wired/Fees charged	○	64,300 yen/8hrs (Weekdays)	Can be used with Meeting Room 1
	Meeting Room 3 [1F]	200	182	99	60	-	-	3.7	Can be divided	Shared Wired · Wifi/Free Private Wired/Fees charged	○	64,700 yen/8hrs (Weekdays)	-
	Meeting Room 3-A [1F]	100	70	48	36	-	-	3.7	×	Shared Wired · Wifi/Free Private Wired/Fees charged	○	39,600 yen/8hrs (Weekdays)	-
	Meeting Room 3-B [1F]	100	70	48	36	-	-	3.7	×	Shared Wired · Wifi/Free	○	39,600 yen/8hrs (Weekdays)	-
	Meeting Room 4 [1F]	200	182	99	60	-	-	3.7	Can be divided	Shared Wired · Wifi/Free Private Wired/Fees charged	○	64,700 yen/8hrs (Weekdays)	-
	Meeting Room 4-A [1F]	100	70	48	36	-	-	3.7	×	Shared Wired · Wifi/Free	○	39,600 yen/8hrs (Weekdays)	-
	Meeting Room 4-B [1F]	100	70	48	36	-	-	3.7	×	Shared Wired · Wifi/Free Private Wired/Fees charged	○	39,600 yen/8hrs (Weekdays)	-
	Reception Room (2 rooms) [1F]	47	-	-	-	-	-	3.0	×	Shared Wired · Wifi/Free	○	18,100 yen/8hrs (Weekdays) *per room	-
	Waiting Room (4 rooms) [1F]	20~24	-	-	12	-	-	3.0	×	Shared Wired · Wifi/Free	○	2,800 yen/8hrs (Weekdays) *per room	-

Other Services

Parking	Language	Business center	Barrier-free
464 vehicles*	English	Photocopier/Printer	Elevator/Braille signs/Guiding blocks/toilet etc.
How to apply	Application Period		Advance Reservations
In person	Large rooms: From the 2nd day of the 18 months before the date of use to 7 days before. Small rooms: From the 2nd day of 6 months before the date of use to 1 day before. ※ Please check the website for details.		As necessary for international and national academic conferences.

*96 underground parking and 368 vehicles at Sendai Aobayama community Square (incl. space for 22 large buses)



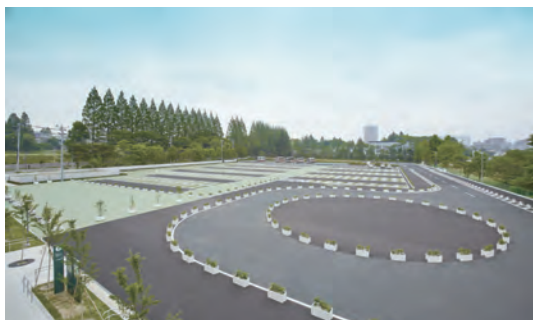
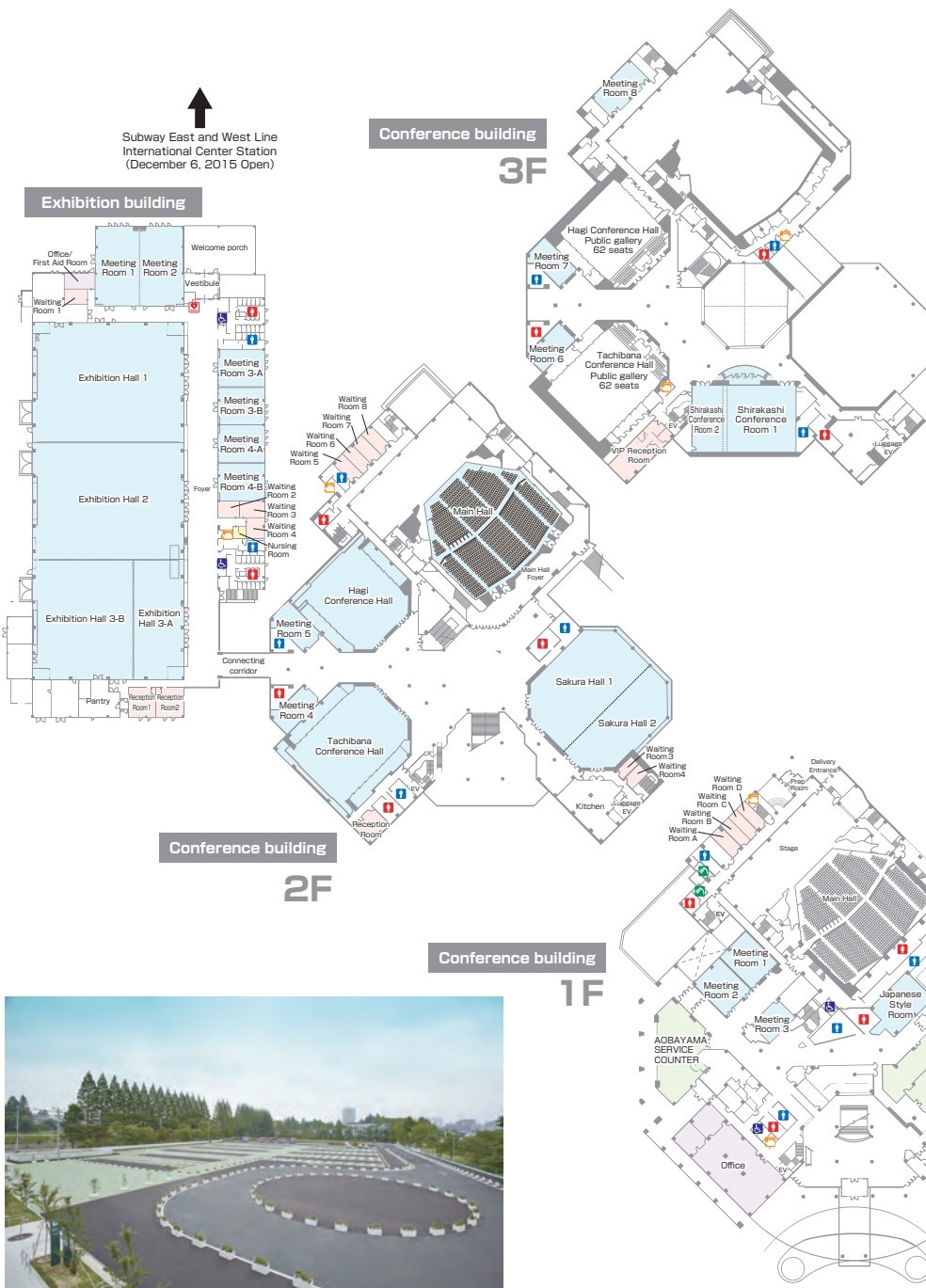
Exhibition Hall

Dining Facilities

Name	Kind	Seating Capacity
AOBAYAMA SERVICE COUNTER	Light Refreshments	25 ~ 50 seats



Main Hall



Sendai Aobayama Community Square



Meeting Room 3



Exhibition Bldg.



Tachibana Conference Hall